

STANDARD EQUIPMENT

10 YEAR LIMITED WARRANTY

Gooseneck w/ Tapered Nose, Padlock Securable Gates, 37" Wide Escape Door,
 2 - Double Wall Sliding Center Gate w/ Slam Latch ,
 Double Wall Sliding Rear Gate w/Posi-Latch, Rubber Rollers on Sliding Gates,
 Double Wall Smooth Extruded Sidewall, GN Compartment Fold Down Gate,
 52" High Solid Sides on 6'8" Tall / 60" on 7'4" Tall, Adjustable GN Hitch Height,
 Full Length Running Boards (7'5" Trailers Only), 2-5/16 Coupler, Rear Skid Plate,
 Rear Rubber Bumper, Spare Tire Rack, Spare Tire & Wheel for Standard Axle,
 Single 10K Spring Loaded Drop Leg Jack, Galvanized Subframe and A Frame Under GN
 T&G Aluminum Floor w/ Aggressive Traction Surface, 4" Aluminum I Beams
 62" Truck Clearance, Graphics Package, Conspicuity Tape, Wrap Around Latch Rear Gate,
 Heavy Duty Wiring Harness, Enclosed Brake Wiring, Safety Chains, One Piece Roof,
 Quick Change Pigtail, 7-Way Plug, High Mount LED Stop, Turn, & Tail Lights,
 Breakaway Battery w/ Charger & LED Dome Light (Switch on Light) in Front Compartment,
 LED Lights, Front ID Lights, Rubber Torsion Axles w/ Spindle Lube 8-Bolt Hubs,
 ST235/85R16 LR G Tires, 3-7K Axles w/ 12" x 2" Electric Brakes on 28'-34'
 3-8K Axles on 36'-40'



6'8" TALL

ITEM	Column1	Column2	AXLE	WEIGHT(LBS)	GVWR	REF#	LIST PRICE
ESTA000100	ES7.5-28-68 GN ENDURA STOCK XD F/G		3-7K		25000	EN903NE57	\$ 40,204
ESTA000102	ES7.5-30-68 GN ENDURA STOCK XD F/G		3-7K		25000	EN913NE77	\$ 41,529
ESTA000104	ES7.5-32-68 GN ENDURA STOCK XD F/G		3-7K		25000	EN923NE97	\$ 42,853
ESTA000106	ES7.5-34-68 GN ENDURA STOCK XD F/G		3-7K		25000	EN043NE17	\$ 44,178
ESTA000108	ES7.5-36-68 GN ENDURA STOCK XD F/G		3-8K		25000	EN293NE69	\$ 50,999
ESTA000110	ES7.5-38-68 GN ENDURA STOCK XD F/G		3-8K		25000	EN204NE89	\$ 52,323
ESTA000112	ES7.5-40-68 GN ENDURA STOCK XD F/G		3-8K		25000	EN314NE09	\$ 53,648

7'4" TALL

ITEM	Column1	Column2	AXLE	WEIGHT(LBS)	GVWR	REF#	LIST PRICE
ESTA000120	ES7.5-28-74 GN ENDURA STOCK XD F/G		3-7K		25000	EN923NE57	\$ 42,801
ESTA000122	ES7.5-30-74 GN ENDURA STOCK XD F/G		3-7K		25000	EN933NE77	\$ 44,126
ESTA000124	ES7.5-32-74 GN ENDURA STOCK XD F/G		3-7K		25000	EN943NE97	\$ 45,451
ESTA000126	ES7.5-34-74 GN ENDURA STOCK XD F/G		3-7K		25000	EN063NE17	\$ 46,775
ESTA000128	ES7.5-36-74 GN ENDURA STOCK XD F/G		3-8K		25000	EN214NE69	\$ 53,596
ESTA000130	ES7.5-38-74 GN ENDURA STOCK XD F/G		3-8K		25000	EN224NE89	\$ 54,921
ESTA000132	ES7.5-40-74 GN ENDURA STOCK XD F/G		3-8K		25000	EN334NE09	\$ 56,245



ENDURA XD LIVESTOCK TRAILER GOOSENECK 8' INSIDE WIDTH

PRICES EFFECTIVE: NOVEMBER 10, 2025

STANDARD EQUIPMENT

10 YEAR LIMITED WARRANTY

Gooseneck w/ Tapered Nose, Padlock Securable Gates, 37" Wide Escape Door,
2 - Double Wall Sliding Center Gate w/ Slam Latch,
Double Wall Sliding Rear Gate w/Posi-Latch, Rubber Rollers on Sliding Gates,
Double Wall Smooth Extruded Sidewall, GN Compartment Fold Down Gate,
52" High Solid Sides on 6'8" Tall / 60" on 7'4" Tall, Adjustable GN Hitch Height,
2-5/16 Coupler, Rear Skid Plate, Galvanized Subframe and A Frame Under GN
T&G Aluminum Floor w/ Aggressive Traction Surface, 4" Aluminum I Beams
Rear Rubber Bumper, Spare Tire Rack, Spare Tire & Wheel for Standard Axle,
Single 10K Spring Loaded Drop Leg Jack, Flat Floor w/ Traction Surface,
62" Truck Clearance, Graphics Package, Conspicuity Tape, Wrap Around Latch Rear Gate,
Heavy Duty Wiring Harness, Enclosed Brake Wiring, Safety Chains, One Piece Roof,
Quick Change Pigtail, 7-Way Plug, High Mount LED Stop, Turn, & Tail Lights,
Breakaway Battery w/ Charger & LED Dome Light (Switch on Light) in Front Compartment,
LED Lights, Front ID Lights, Rubber Torsion Axles w/ Spindle Lube 8-Bolt Hubs,
ST235/85R16 LR G Tires, 3-7K Axles w/ 12" x 2" Electric Brakes on 28'-34'
3-8K Axles on 36'-40'



6'8" TALL

ITEM	Column1	Column2	AXLE	WEIGHT(LBS)	GVWR	REF#	LIST PRICE
ESTA000140	ES8-28-68 GN ENDURA STOCK XD F/G		3-7K		25000	EN123NE77	\$ 41,788
ESTA000142	ES8-30-68 GN ENDURA STOCK XD F/G		3-7K		25000	EN133NE97	\$ 43,113
ESTA000144	ES8-32-68 GN ENDURA STOCK XD F/G		3-7K		25000	EN243NE17	\$ 44,438
ESTA000146	ES8-34-68 GN ENDURA STOCK XD F/G		3-7K		25000	EN253NE37	\$ 45,762
ESTA000148	ES8-36-68 GN ENDURA STOCK XD F/G		3-8K		25000	EN404NE89	\$ 52,583
ESTA000150	ES8-38-68 GN ENDURA STOCK XD F/G		3-8K		25000	EN514NE09	\$ 53,908
ESTA000152	ES8-40-68 GN ENDURA STOCK XD F/G		3-8K		25000	EN524NE29	\$ 55,232

7'4" TALL

ITEM	Column1	Column2	AXLE	WEIGHT(LBS)	GVWR	REF#	LIST PRICE
ESTA000160	ES8-28-74 GN ENDURA STOCK XD F/G		3-7K		25000	EN143NE77	\$ 44,386
ESTA000162	ES8-30-74 GN ENDURA STOCK XD F/G		3-7K		25000	EN153NE97	\$ 45,710
ESTA000164	ES8-32-74 GN ENDURA STOCK XD F/G		3-7K		25000	EN263NE17	\$ 47,035
ESTA000166	ES8-34-74 GN ENDURA STOCK XD F/G		3-7K		25000	EN273NE37	\$ 48,360
ESTA000168	ES8-36-74 GN ENDURA STOCK XD F/G		3-8K		25000	EN424NE89	\$ 55,181
ESTA000170	ES8-38-74 GN ENDURA STOCK XD F/G		3-8K		25000	EN534NE09	\$ 56,505
ESTA000172	ES8-40-74 GN ENDURA STOCK XD F/G		3-8K		25000	EN544NE29	\$ 57,830

ALL PRICES SUBJECT TO CHANGE, FINAL PRICING WILL BE CONFIRMED THROUGH ORDER VERIFICATION

PRICE EFFECTIVITY IS BASED ON ECD OF ORDER

ENDURA STOCK AXLE/BRAKE/TIRE OPTIONS

OPTIONS FOR (3) 7K RUBBER TORSION AXLES W/ST235/85R16 LRG TIRES

ITEM			REF#	LIST PRICE
X9138	8K AXLE (3), RUBBER TORSION ILOS (3)7K	ST235/85R16 LRG, 25000 GVWR	AL320SO82	\$ 3,094
X9139	10K AXLE (3), RUBBER TORSION ILOS (3)7K	235/75R17.5 LRJ, 35900 GVWR	AL650SO55	\$ 7,344
X9068	8K AXLES (2), RUBBER TORSION ILOS (3)7K	ST235/85R16 LRG, 17500 GVWR	AL300SO77	\$ 490
X9132	8K AXLES (2) ILOS (3)7K AXLES	235/75R17.5 LRJ, 17500 GVWR	AL910SO81	\$ 2,573
X9069	10K AXLES (2), RUBBER TORSION ILOS (3)7K	235/75R17.5 LRJ, 35900 GVWR	AL530SO35	\$ 4,591

OPTIONS FOR (3) 8K RUBBER TORSION AXLES W/ST235/85R16 LRG TIRES

ITEM			REF#	LIST PRICE
X9141	10K AXLES (3), RUBBER TORSION ILOS (3)8K	235/75R17.5 LRJ, 35900 GVWR	AL230SO73	\$ 4,251
*Trailers with triple 10K axles has a higher than 26,000# hauling capacity will be need to be charged FET(Federal Excise Tax)				

BRAKES

ITEM			REF#	LIST PRICE
X9070	ELECTRIC/HYDRAULIC BRAKES, ILOS 2 ELECT		BR520BR73	\$ 3,342
X9071	ELECTRIC/HYDRAULIC BRAKES, ILOS 3 ELECT		BR920BR15	\$ 3,786

TIRE/WHEEL OPTIONS (ILOS)

ITEM			REF#	LIST PRICE
X9072	T/W ST235/85R 16 LR G ILOS 16E	Westlake	AL100SO51	\$ 196
X9074	T/W 235/75R 17.5 LR J ILOS 16E	Westlake	AL200SO55	\$ 331
X9142	T/W 235/75R 17.5 LR J ILOS 16G	Westlake	AL100SO03	\$ 134

TIRE/WHEEL OPTIONS (ADDITIONAL SPARE)

ITEM			REF#	LIST PRICE
234294	TIRE & WHEEL ST235/80R16E W/SL MOD LION	Castle Rock	TI100WH83	\$ 238
234296	TIRE & WHEEL ST235/85R16G W/SL MOD LION	Westlake	TI300WH07	\$ 399
234398	TIRE & WHEEL 235/75R17.5J W/SL MOD LION	Westlake	TI400WH32	\$ 561
X9076	ALUMINUM SPOKE T/W ILOS 16" WHEEL	*price per wheel	AL100SO88	\$ 244
X9075	ALUM WHEEL ILOS 17.5 J WHEEL	*price per wheel	AL100SO88	\$ 244

HIDOUT STOCK ACCESSORIES AND OPTIONS

BODY & FRAME OPTIONS

ITEM					REF#	LIST PRICE
X9003	3" SLOTTED SIDES (28" FROM FLOOR)			per Trailer	AL100SO99	\$ 258
X9001	FRONT VENT & COVER				AL300SO10	\$ 403
X9004	TIE RAIL (INSIDE OR OUTSIDE)			per ft.	AL000SO23	\$ 30
231744	TIE LOOP CAST AL			Bolt-On, External (price each)	MI000 P07	\$ 9
89321	TIE LOOP, 1/2" AL ROUND X 7-1/2"			Weld-On, Internal (price each)	AL000 P06	\$ 8
X9007	DUAL JACK, SINGLE SPEED ILOS			Gooseneck Only	AL200SO93	\$ 381
X9008	DUAL JACK, 2 SPD GEARBOX ILOS			Gooseneck Only	AL600SO07	\$ 788
X9009	12K ELECT/HYD BIG FOOT JACK ILOS			Gooseneck Only, Includes Battery	AL320SO88	\$ 3,101

ESCAPE DOOR & SIDE RAMP OPTIONS (14,500 GVWR)-Restrictions may apply to placement

ITEM					REF#	LIST PRICE
X9016	ADDITIONAL 37" ESCAPE DOOR, EITHER SIDE				AL600SO90	\$ 896
X9127	52" WIDE ESCAPE DOOR, ADDITIONAL				AL900SO19	\$ 1,194
X9013	52" WIDE ESCAPE DOOR ILOS				AL200SO35	\$ 305
X9128	52" WIDE ESCAPE DOOR, NO SILL, ILOS 37"				AL010SO08	\$ 1,309
X9129	52" WIDE ESCAPE DOOR, NO SILL, ADD				AL610SO93	\$ 2,199
X9015	52" WIDE FOLD DOWN SIDE RAMP				AL910SO93	\$ 2,588
X9014	52" WIDE FOLD DOWN SIDE RAMP ILOS				AL310SO10	\$ 1,701
X9130	52"W FOLD DOWN SIDE RAMP, NO SILL, ADD				AL720SO66	\$ 3,592
X9131	52"W FOLD DOWN SIDE RAMP, NO SILL, ILOS				AL020SO84	\$ 2,706
X9017	FULLY ENCLSD LIVESTOCK ESCAPE DOOR ILOS				AL100SO37	\$ 178

CENTER GATE OPTIONS

ITEM					REF#	LIST PRICE
X9020	DELETE SLIDING CENTER GATE & POSTS				AL00-SO40	\$ (540)
X9021	MOVE CENTER GATE FROM STANDARD POSITION				AL100SO87	\$ 243
X9022	ADJ SOLID CNTR GATE ILOS, NO SLIDER				AL110SO94	\$ 1,551
X9023	ADJ SOLID CNTR GATE, NO SLIDER				AL320SO85	\$ 3,097
X9134	ADJ SLIDING CNTR GATE ILOS				AL410SO05	\$ 1,825
x9133	ADJ SLIDIING CNTR GATE				AL520SO94	\$ 3,369
X9002	ADD SLIDING CENTER GATE				AL110SO91	\$ 1,547
X9024	SOLID CENTER GATE ILOS				AL000SO00	\$ -
X9025	ADDITIONAL SOLID CENTER GATE				AL010SO13	\$ 1,316
X9026	ADDITIONAL SET OF CENTER GATE POSTS				AL400SO06	\$ 527
X9027	3" SLOT IN CENTER GATE				AL000SO77	\$ 100
X9140	PEN (1 PAIR, 4' LONG)				AL210SO52	\$ 1,626

REAR GATE OPTIONS (ILOS)

ITEM					REF#	LIST PRICE
X9028	SOLID REAR GATE (NON-SLIDING)			w/ Standard L.S. Opening	AL000SO00	\$ -
X9029	ENCLOSED SOLID (NON-SLIDING) REAR GATE				AL000SO00	\$ -
X9030	1/2 ROLL-UP DOOR IN LIVESTOCK REAR GATE				AL600SO45	\$ 838
X9031	3" SLOT IN REAR GATE				AL000SO77	\$ 100
X9032	DOUBLE REAR DOORS WITH CAM LATCH				AL200SO30	\$ 299
X9033	DBL REAR DOORS W/ FOLD AROUND HINGES			Lay Flat Hinges	AL500SO96	\$ 774
X9137	4' REAR RAMP BEHIND REAR GATE				AL320SO24	\$ 3,018

ALL PRICES SUBJECT TO CHANGE, FINAL PRICING WILL BE CONFIRMED THROUGH ORDER VERIFICATION

PRICE EFFECTIVITY IS BASED ON ECD OF ORDER

GN COMPARTMENT GATES & DOORS						
ITEM	Column1	Column2	Column3	Column4	Column5	REF# LIST PRICE
X9010	GN SLAM DOOR W/ LOCK			Available on Both Sides		AL300SO84 \$ 499
X9011	WINDOW IN GOOSENECK COMPARTMENT 15X34			Available on Both Sides		AL200SO27 \$ 295
X9012	GN SLAM DOOR WITH LOCK ON FRONT OF NOSE			Drop Down		AL500SO96 \$ 774
X9018	EZ STORE RAMPS ILOS FOLD DOWN GN GATE					AL200SO91 \$ 378

DOUBLE DECK OPTIONS						
ITEM	Column1	Column2	Column3	Column4	Column5	REF# LIST PRICE
X9036	DOUBLE DECK RAIL, PER FT. OF TRAILER					AL000SO32 \$ 42
X9037	SPLIT SLIDING CENTER GATE ILOS					AL500SO16 \$ 670
X9038	SPLIT SLIDING REAR GATE ILOS					AL500SO16 \$ 670
X9039	SPLIT ESCAPE DOOR					AL100SO49 \$ 194
X9040	DOUBLE DECK FLOORING, 7' WIDTH, PER FT			weight rating 70lbs per sqft per ft		AL100SO11 \$ 144
X9041	DOUBLE DECK FLOORING, 8' WIDTH, PER FT			weight rating 70lbs per sqft per ft		AL100SO25 \$ 162
** weight rating 70lbs per sqft per ft						

LIGHTING OPTIONS						
ITEM	Column1	Column2	Column3	Column4	Column5	REF# LIST PRICE
X9042	LED LOADING LIGHT - REQUIRES SWITCH			1900 Lumens		AL100SO42 \$ 184
X9043	RECESSED TOGGLE SWITCH - DOME OR LOAD					AL000SO48 \$ 62
X9045	EXTRA LED CLEARANCE LIGHTS (PER PAIR)					AL000SO55 \$ 71
X9046	RECESSED 3 WAY TOGGLE SWITCH			Requires 2		AL000SO59 \$ 77
X9047	LED BACK UP LIGHTS (PER PAIR)					AL200SO93 \$ 381
X9048	LED DOME LIGHT					AL000SO59 \$ 77

VENTS						
ITEM	Column1	Column2	Column3	Column4	Column5	REF# LIST PRICE
X9049	CRANK-UP ROOF VENT					AL100SO47 \$ 191
X9050	DRAFT/EXHAUST (POP-UP) ROOF VENT					AL100SO35 \$ 175

RUBBER MAT (Add rubber matting cost and installation cost)						
ITEM	Column1	Column2	Column3	Column4	Column5	REF# LIST PRICE
X9051	1/2"X60"X84" RUBBER MATTING			per Sheet		AL100SO44 \$ 187
X9052	3/4"X60"X84" RUBBER MATTING			per Sheet		AL100SO71 \$ 222
X9053	INSTALLATION OF MATTING FOR 7.0' TRAILER					AL100SO79 \$ 232
X9054	INSTALLATION OF MATTING FOR 7.5' AND 8.0					AL200SO85 \$ 370

PLEXI-GLASS & STORAGE						
ITEM	Column1	Column2	Column3	Column4	Column5	REF# LIST PRICE
91899	ENDURA PLEXIGLASS HARDWARE KIT					KI100K117 \$ 152
233851	PLEXIGLASS STRIP 3/16 X 7-3/16 X 96 BRNZ			Sold in 8' Lengths		MI000 P52 \$ 68
X9035	PLEXI-GLASS INSTALLED AT HILLSBORO			per ft.		AL000SO62 \$ 81
X9034	PLEXI-GLASS STORAGE TRAY			GN or Straight Hitch Trailer		AL300SO75 \$ 487
** Plexi-Glass Install Kit Includes: 50 retention plugs, 14 filler end pieces, 1 drill guide, and installation instructions						
*** Plexi-Glass Installed per foot of trailer, Includes 2 slots left side, 2 slots right side, escape door & rear gate						
****Pricing = MSRP * Length(feet) of Trailer, Includes 2 slots left side, 2 slots right side, escape door & rear gate						

COMBO ROOF COVE & GOOSENECK NOSE BLACK						
ITEM	Column1	Column2	Column3	Column4	Column5	REF# LIST PRICE
X9056	(1) PAINT ROOF COVE - BLACK			(Trailer + Nose Length) * MSRP = Price		AL000SO33 \$ 43
X9057	(2) PAINT GOOSENECK NOSE BLACK			Includes Nose and Sides		AL400SO67 \$ 606
** example (1)+(2) :7x20+8' nose = (28 ft total trailer x \$43= \$1204)+(\$606) = \$1810						

PAINT ROOF COVE /ft of total trailer length (include gooseneck & 2' V-Nose)						
ITEM	Column1	Column2	Column3	Column4	Column5	REF# LIST PRICE
X9055	PAINT ROOF COVE - BLACK			(Trailer + Nose Length) * MSRP = Price		AL000SO33 \$ 43
** Example: SH 7x18 + 2' v-Nose = 20 ft total trailer X \$43 = \$860						

ENDURA LIVESTOCK AND COMBO OPTIONS

BODY & FRAME OPTIONS

ITEM	Column2	Column3	Column4	Column5	Column6	REF#	LIST PRICE
X9077	FULLY ENCLOSE SIDE (PER FT)				per ft./ per side	AL000SO60	\$ 78

DRESSING ROOM OPTIONS (d/r)

ITEM	Column2	Column3	Column4	Column5	Column6	REF#	LIST PRICE
X9078	ANGLED D/R W/ SEALED DOOR, 2; SHORT WALL				Deletes Escape Door	AL510SO35	\$ 1,994
X9079	4' RECTANGULAR D/R W/ SEALED D/R DOOR				Deletes Escape Door	AL510SO35	\$ 1,994
X9080	SLIDE OUT CAMPER STEP - D/R DOOR				N/A on 8' W Trailer	AL200SO41	\$ 313
X9081	SADDLE RACK, 2 PEDESTAL					AL400SO76	\$ 618
X9082	SADDLE RACK, 3 PEDESTAL					AL500SO87	\$ 762
X9083	SADDLE RACK, 4 PEDESTAL					AL700SO01	\$ 910
X9084	TACK HOOKS, BAR OF 6					AL000SO68	\$ 88
X9085	BRUSH TRAY - SPECIFY PLACEMENT					AL000SO71	\$ 92
X9086	BLANKET BAR					AL000SO59	\$ 77
X9088	WALK THROUGH DOOR FROM D/R TO LIVESTOCK					AL600SO23	\$ 809

LIVESTOCK/HORSE COMPARTMENT OPTIONS

ITEM	Column2	Column3	Column4	Column5	Column6	REF#	LIST PRICE
X9089	SLANT STALL DIVIDER, PADDED					AL700SO35	\$ 955
X9090	SLANT STALL DIVIDER, PADDED, TELESCOPING					AL010SO20	\$ 1,325
X9091	FULL SLANT STALL DIVIDER/STUD GATE ILOS					AL010SO01	\$ 1,300
X9092	PADDING ON LIVESTOCK SIDE OF ANGLE WALL					AL000SO93	\$ 121
X9093	KICK PANEL - RUBBER 48" HEIGHT				Head Side, per ft.	AL000SO66	\$ 86
94263	BOLT-ON TIE LOOP PACKAGE				External (price each)	EN000NE35	\$ 45
89321	TIE LOOP, 1/2" AL ROUND X 7-1/2"				Weld-On, Internal (price each)	AL000 P06	\$ 8
X9004	TIE RAIL (INSIDE OR OUTSIDE)				per ft.	AL000SO23	\$ 30

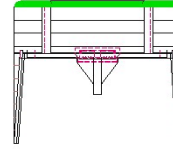
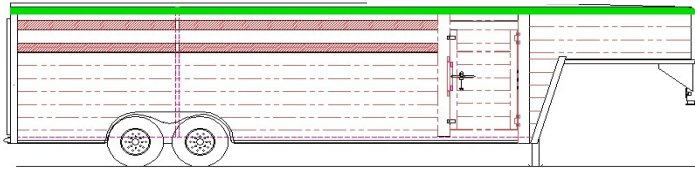
WINDOWS

ITEM	Column2	Column3	Column4	Column5	Column6	REF#	LIST PRICE
X9011	WINDOW IN GOOSENECK COMPARTMENT 15X34				Available on Both Sides	AL200SO27	\$ 295
X9095	SIDE WINDOW 14X21					AL100SO95	\$ 253

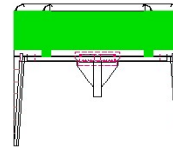
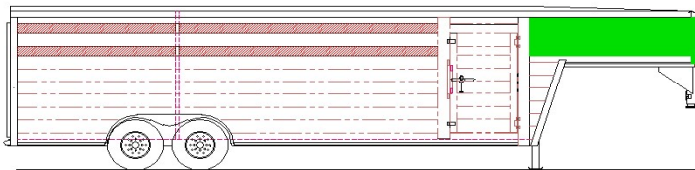
ENDURA PAINT & POLISH OPTIONS

GREEN = PAINT
BLUE = POLISH
YELLOW = TREAD PLATE

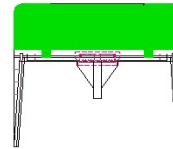
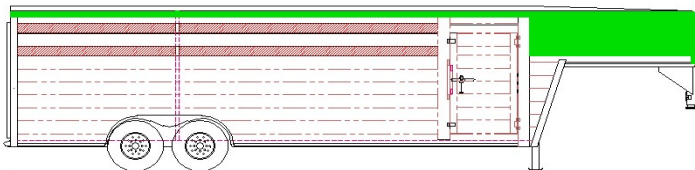
OPTION 1: PAINT ROOF COVE BLACK
INCLUDES SIDES AND FRONT



OPTION 2: PAINT NOSE BLACK
INCLUDES SIDES AND FRONT



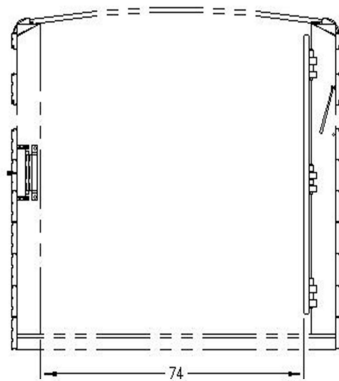
OPTION 3: PAINT ROOF COVE AND NOSE BLACK
COMBINE COST OF OPTION 1 AND OPTION 2 FOR DEALER COST



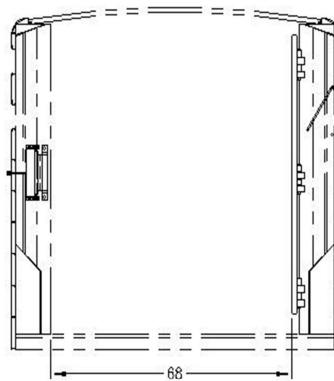
TITLE						<i>Hillsboro Industries</i> 220 Industrial Road Hillsboro, KS 67063	1-800-835-0209 hi@hillsboroindustries.com www.hillsboroindustries.com
DWG NO.	REV	DATE	DRAWN BY	SCALE	PAGE		
	A	12-7-16	APD	1/60			

PAINT OPTIONS

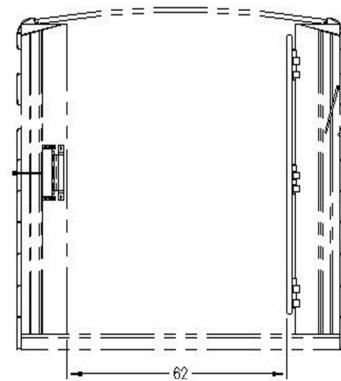
ENDURA STOCK TRAILERS 7'6"W CENTER GATE PASS-THROUGH WIDTH



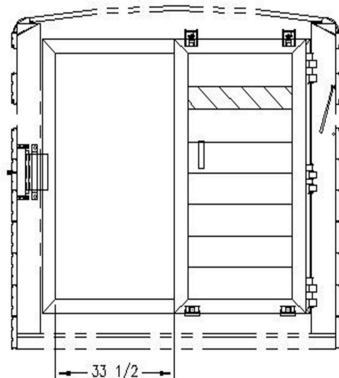
PASS-THROUGH WIDTH
W/ 6K, 7K OR 7.2K AXLES
SHOWN WITH CENTER GATE OPEN



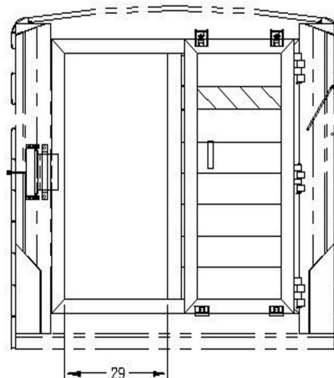
PASS-THROUGH WIDTH
W/ 8K AXLES
SHOWN WITH CENTER GATE OPEN



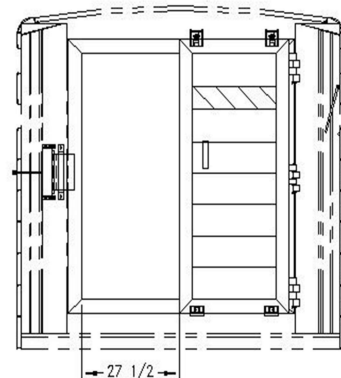
PASS-THROUGH WIDTH
W/ 10K AXLES
SHOWN WITH CENTER GATE OPEN



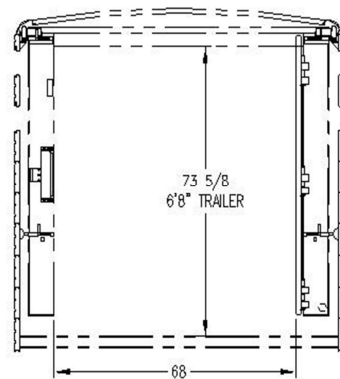
PASS-THROUGH WIDTH
W/ 6K, 7K OR 7.2K AXLES
SHOWN WITH ROLLER DOOR OPEN



PASS-THROUGH WIDTH
W/ 8K AXLES
SHOWN WITH ROLLER DOOR OPEN



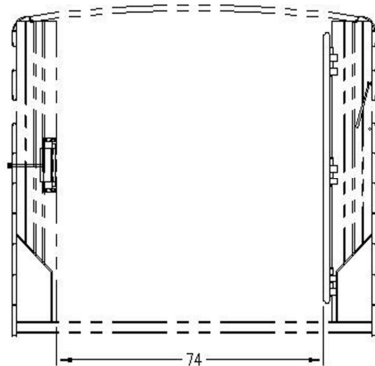
PASS-THROUGH WIDTH
W/ 10K AXLES
SHOWN WITH ROLLER DOOR OPEN



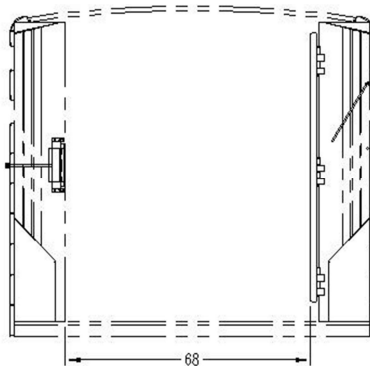
PASS-THROUGH DIMENSIONS
ADJUSTABLE POSITION CENTER GATE

ENDURA STOCK TRAILERS 8'2"W

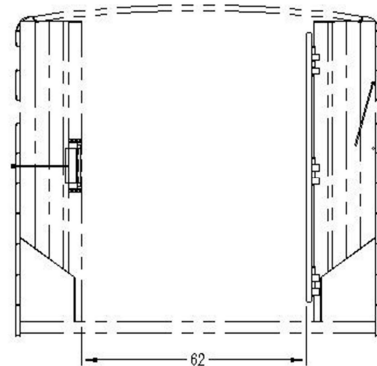
CENTER GATE PASS-THROUGH WIDTH



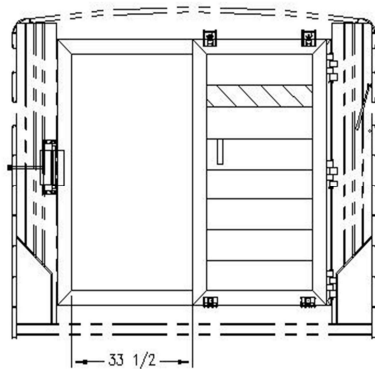
PASS-THROUGH WIDTH
W/ 6K, 7K OR 7.2K AXLES
SHOWN WITH CENTER GATE OPEN



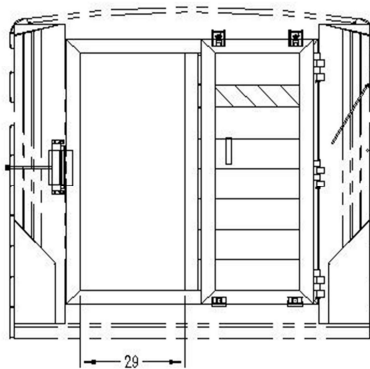
PASS-THROUGH WIDTH
W/ 8K AXLES
SHOWN WITH CENTER GATE OPEN



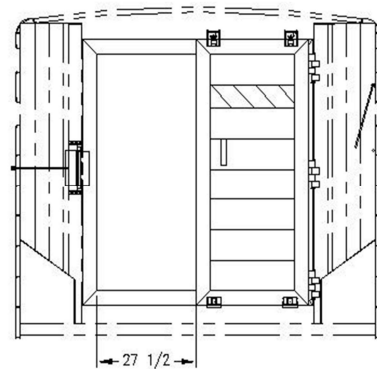
PASS-THROUGH WIDTH
W/ 10K AXLES
SHOWN WITH CENTER GATE OPEN



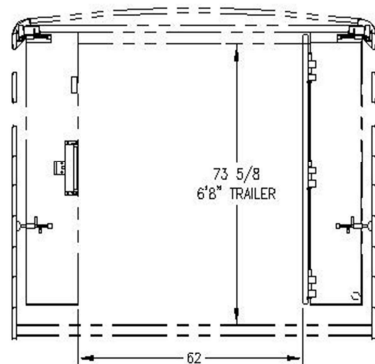
PASS-THROUGH WIDTH
W/ 6K, 7K OR 7.2K AXLES
SHOWN WITH CENTER GATE OPEN



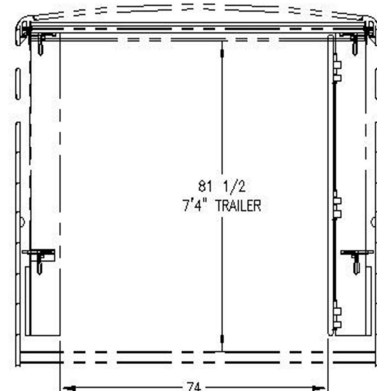
PASS-THROUGH WIDTH
W/ 8K AXLES
SHOWN WITH CENTER GATE OPEN



PASS-THROUGH WIDTH
W/ 10K AXLES
SHOWN WITH CENTER GATE OPEN

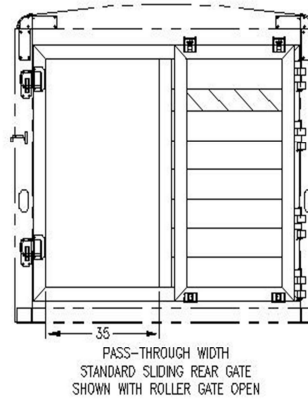
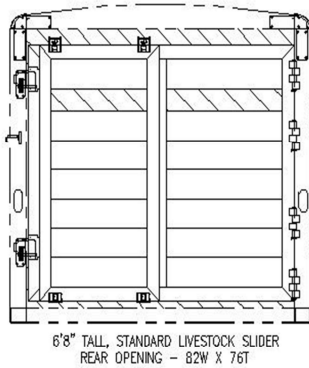


PASS-THROUGH DIMENSIONS
ADJUSTABLE POSITION CENTER GATE

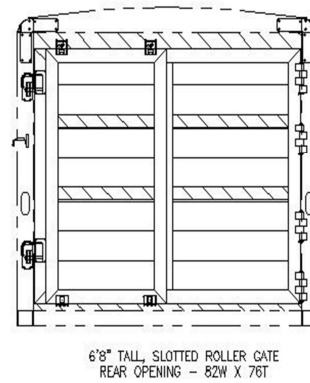
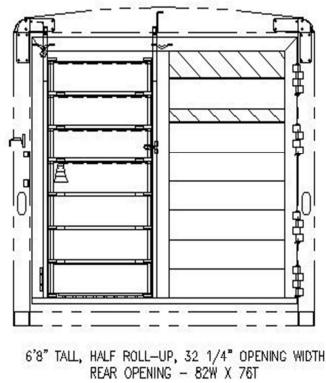
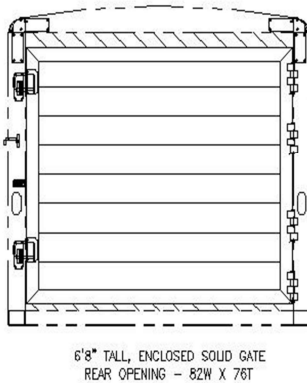
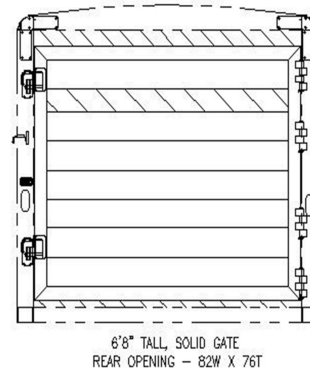
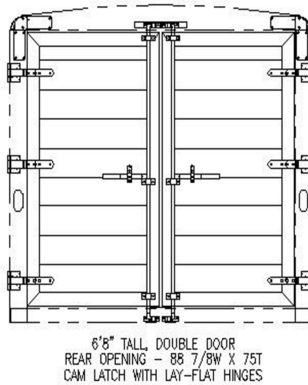
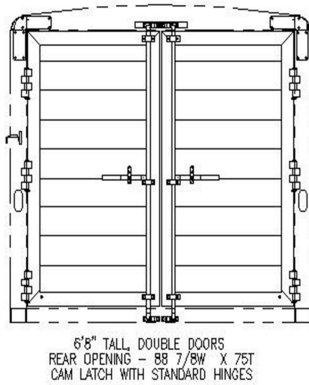


REAR GATE CONFIGURATIONS, ENDURA STOCK TRAILERS 7'6"W 6'8"T

STANDARD CONFIGURATION

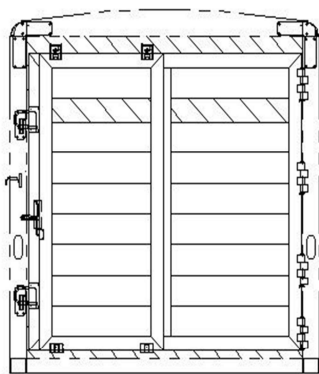


OPTIONAL CONFIGURATIONS

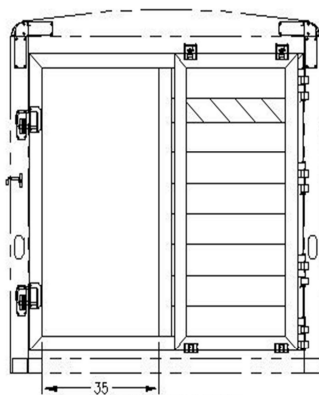


REAR GATE CONFIGURATIONS, ENDURA STOCK TRAILERS 7'6"W 7'4"T

STANDARD CONFIGURATION

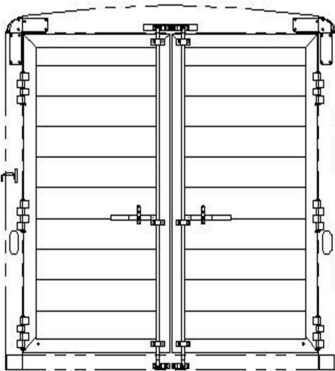


7'4" TALL, STANDARD LIVESTOCK SLIDER
REAR OPENING - 82W X 84T

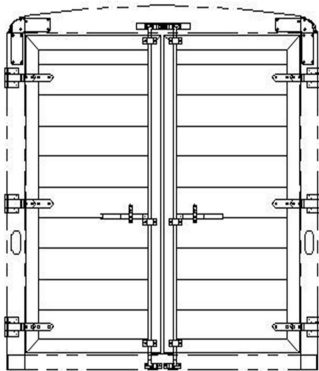


PASS-THROUGH WIDTH
STANDARD SLIDING REAR GATE
SHOWN WITH ROLLER GATE OPEN

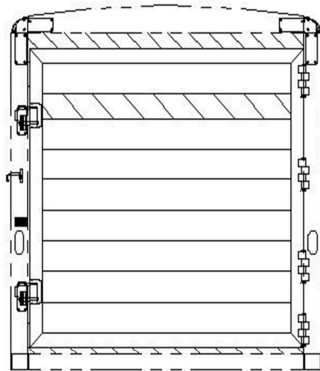
OPTIONAL CONFIGURATIONS



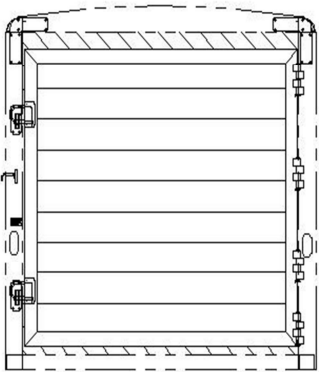
7'4" TALL, DOUBLE DOOR
REAR OPENING - 88 7/8W X 83T
CAM LATCH WITH STANDARD HINGES



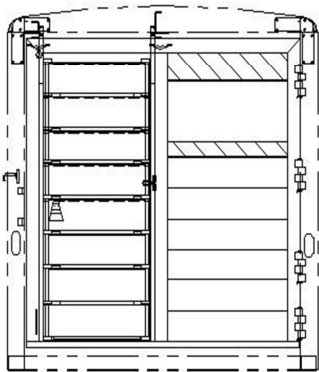
7'4" TALL, DOUBLE DOOR
REAR OPENING - 88 7/8W X 83T
CAM LATCH WITH LAY-FLAT HINGES



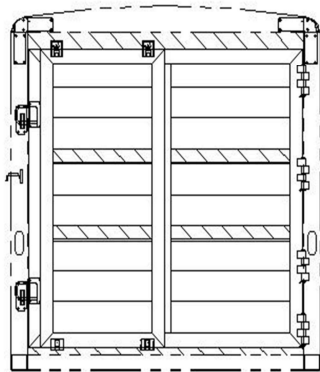
7'4" TALL, SOLID GATE
REAR OPENING - 82W X 84T



7'4" TALL, ENCLOSED SOLID GATE
REAR OPENING - 82W X 84T



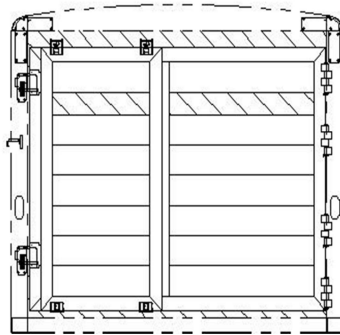
7'4" TALL, HALF ROLL-UP, 32 1/4" OPENING WIDTH
REAR OPENING - 82W X 84T



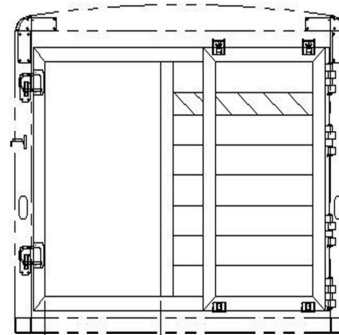
7'4" TALL, SLOTTED ROLLER GATE
REAR OPENING - 82W X 84T

REAR GATE CONFIGURATIONS, ENDURA STOCK TRAILERS 8'2"W 6'8"T

STANDARD CONFIGURATION

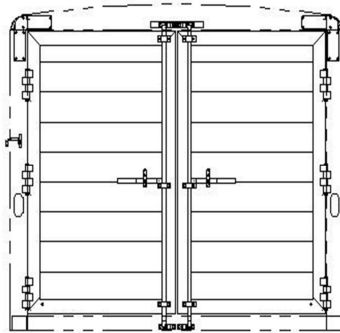


6'8" TALL, STANDARD LIVESTOCK SLIDER
REAR OPENING - 90 1/2" W X 76" T

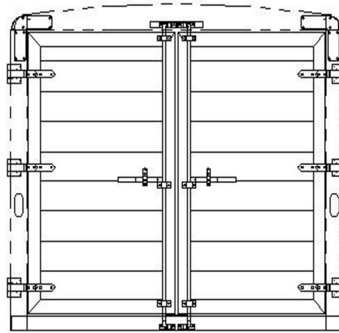


PASS-THROUGH WIDTH
STANDARD SLIDING REAR GATE
SHOWN WITH ROLLER GATE OPEN

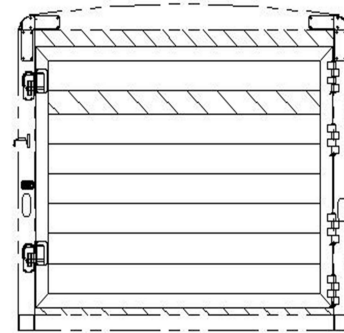
OPTIONAL CONFIGURATIONS



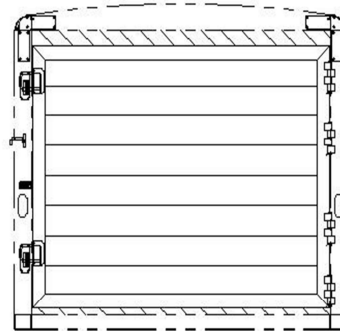
6'8" TALL, DOUBLE DOORS
REAR OPENING - 88 7/8" W X 76" T
CAM LATCH WITH STANDARD HINGES



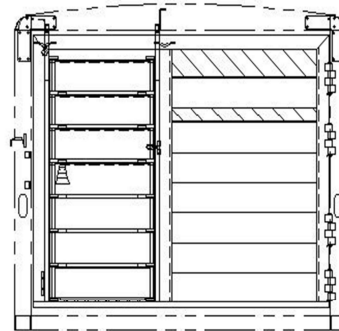
6'8" TALL, DOUBLE DOOR
REAR OPENING - 88 7/8" W X 76" T
CAM LATCH WITH LAY-FLAT HINGES



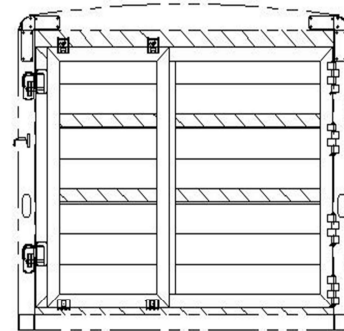
6'8" TALL, SOLID GATE
REAR OPENING - 90 1/2" W X 76" T



6'8" TALL, ENCLOSED SOLID GATE
REAR OPENING - 90 1/2" W X 76" T



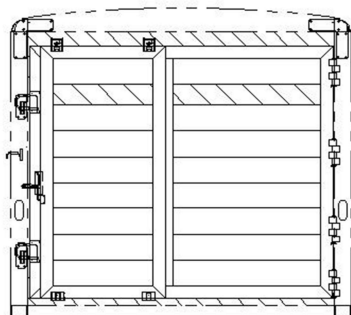
6'8" TALL, HALF ROLL-UP, 32 1/4" OPENING WIDTH
REAR OPENING - 90 1/2" W X 76" T



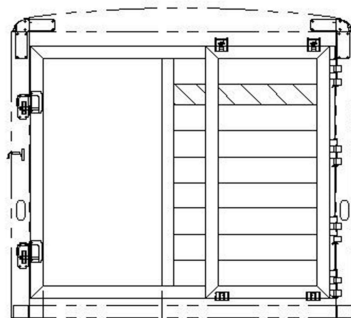
6'8" TALL, SLOTTED ROLLER GATE
REAR OPENING - 90 1/2" W X 76" T

REAR GATE CONFIGURATIONS, ENDURA STOCK TRAILERS 8'2"W 7'4"T

STANDARD CONFIGURATION

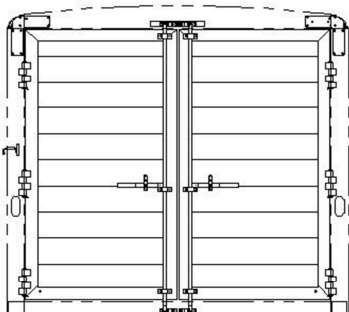


7'4" TALL, STANDARD LIVESTOCK SLIDER
REAR OPENING - 90 1/2W X 84T

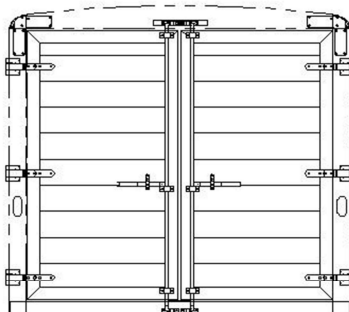


35
PASS-THROUGH WIDTH
STANDARD SLIDING REAR GATE
SHOWN WITH ROLLER GATE OPEN

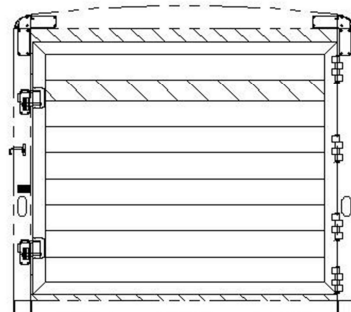
OPTIONAL CONFIGURATIONS



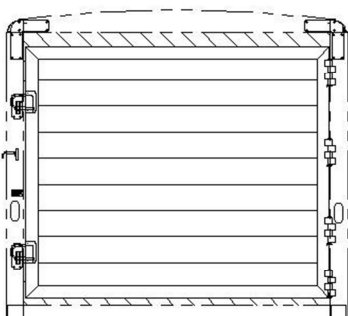
7'4" TALL, DOUBLE DOOR
REAR OPENING - 88 7/8W X 83T
CAM LATCH WITH STANDARD HINGES



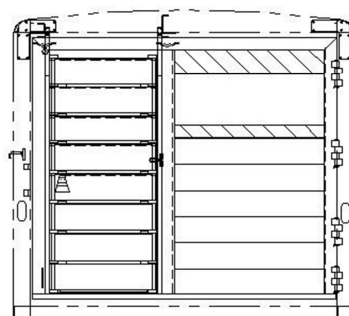
7'4" TALL, DOUBLE DOOR
REAR OPENING - 88 7/8W X 83T
CAM LATCH WITH LAY-FLAT HINGES



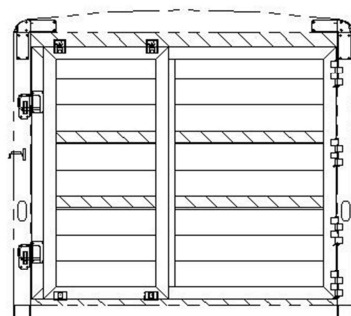
7'4" TALL, SOLID GATE
REAR OPENING - 90 1/2W X 84T



7'4" TALL, ENCLOSED SOLID GATE
REAR OPENING - 90 1/2W X 84T

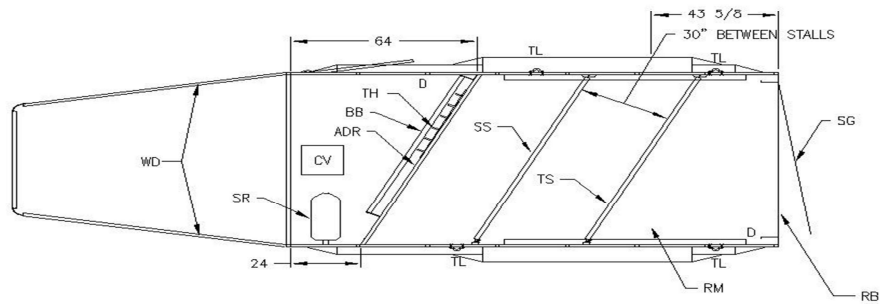


7'4" TALL, HALF ROLL-UP, 32 1/4" OPENING WIDTH
REAR OPENING - 90 1/2W X 84T



7'4" TALL, SLOTTED ROLLER GATE
REAR OPENING - 90 1/2W X 84T

ENDURA ALUMINUM TRAILER
7' X 16' (3) HORSE COMBO
6'8"/7'4" TALL



WD = 15 X 34 WINDOWS
D = DOME LIGHTS (2)
TL = TIE LOOPS (4) BOLT-ON
BB = BLANKET BAR
SG = SLIDING REAR GATE
SS = SLANT STALL DIVIDER
TS = TELESCOPING SLANT STALL DIVIDER

TH = TACK HOOKS
SR = 3 PEDESTAL SADDLE RACK FOR 3 HORSE
SR = 4 PEDESTAL SADDLE RACK FOR 4 HORSE
CV = CRANK-UP ROOF VENT
ADR = ANGLED DRESSING ROOM
RB = RUBBER BUMPER
RM = RUBBER MAT ON FLOOR

ENDURA ALUMINUM TRAILER
7' X 20' (4) HORSE COMBO
6'8"/7'4" TALL

