



## Aluminum SuperDoor Tapered Toolbox Installation



- Always wear protective clothing and eyewear when operating tools.
- Observe safe tool operation as specified in tool operating instructions.

Locate and identify all components supplied with the toolbox. Hardware is packaged inside toolbox.

Quantity	Description
1	Toolbox
1	Mount Angle
1	Toolbox Mount
11	3/8 x 1 HHCS
11	3/8 Hex Nut
22	3/8 Flat Washer

This toolbox will mount to 96" wide tapered front Hillsboro 2500 and 3000 series aluminum beds at least 102" long.

Left hand (driver's side) installation is shown, right hand opposite.

### Installation on an Aluminum Bed

1. Locate second I-beam crossmember from the front of bed. Drill 13/32" hole 7/16" from back edge of bottom leg and 14-5/8" from outside of the truck bed as shown in figure 1. Use the aluminum toolbox mount angle as a template to drill 2 additional holes in crossmember. Fasten the mount angle to the toolbox using the hardware provided. Finger tighten only.

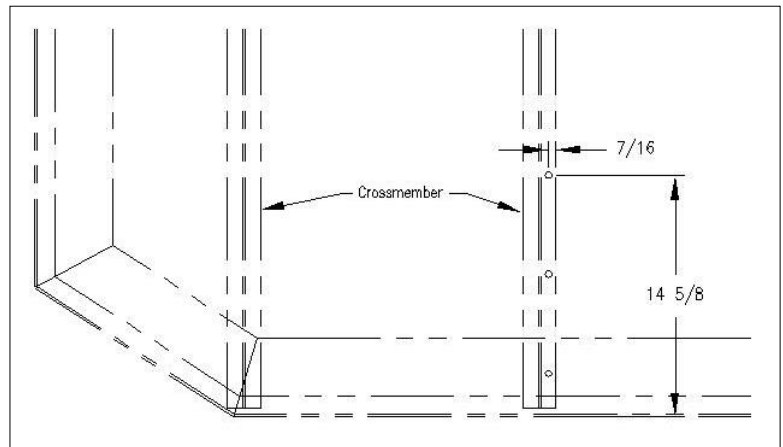


Figure 1

2. Install (1) 3/8 x 1 HHCS with flatwasher through hole in toolbox front mount and hole in toolbox front as shown in figure 2. Secure with flatwasher and nut inside toolbox. Position front mount square with toolbox as shown and drill hole in toolbox matching other hole in mount. Secure with hardware.
3. Lift toolbox into location under bed as shown. Face of door should be flush with face of rubrail on both side and taper.



Figure 2



Figure 3

4. Match drill (3) 13/32" holes from mount angle into toolbox as shown in figure 3 and 4. Temporarily install hardware.
5. Match drill (2) holes from front mount through front rubrail of bed, see figure 2. Temporarily install hardware.
6. Mark location of hole in hinge shield on bottom of bed rubrail. See figure 5.
7. Remove toolbox from bed, drill 13/32" hole in bottom of rubrail at marked location.
8. Place toolbox back in position and fasten with provided hardware.



Figure 5

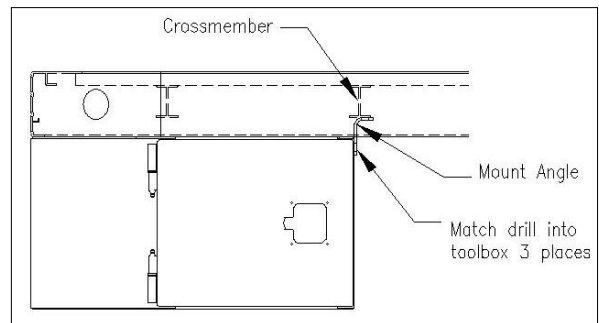


Figure 4