

## Tarp Roller & Tarp Installation on Dump Trailer

Always wear protective clothing and eyewear when operating tools.  
 Observe safe tool operation as specified in tool operating instructions.

### PARTS

<u>Quantity</u>	<u>Description</u>
1	Turbo Tarp Roller
1	Tarp 86"x16'
4	3/8x1-1/2 HHCS
4	3/8 Flat Washer
4	3/8 Lock Nut

### INSTALLATION

Locate and identify all components supplied with the Tarp Roller & Tarp Kit. Hardware is packaged in a 7x10 plastic bag.

Locate the tarp roller. Assemble the tarp roller by inserting the smaller tube into the larger tube. Orient the tarp roller so that the crank handle is on the driver's side of the trailer. Clamp the tarp roller brackets to the stake pockets so that the brackets are positioned as shown in Figure 1 or 2. Drill (2) 13/32" holes into each stake pocket. Secure with the hardware included (4) 3/8x1-1/2 bolts, (4) 3/8 flat washers, and (4) 3/8 lock nuts.

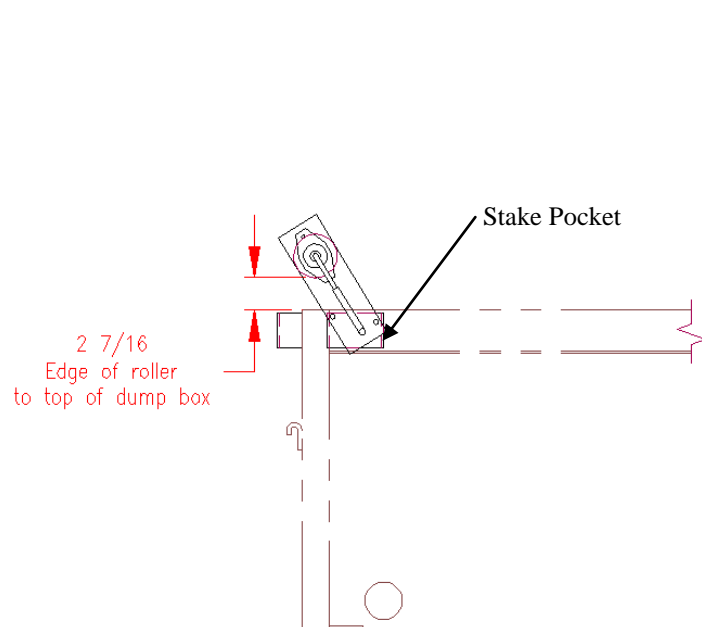


Figure 1 – Left Hand (Drivers Side) Dump Box

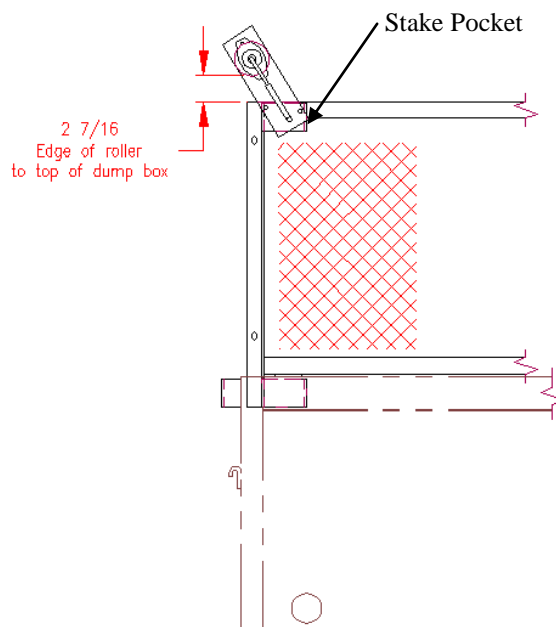


Figure 2 – Optional Side Extension Left Side

Manufacturer's Notice: All specifications are subject to change without notice and without incorporating them into prior units.

Locate the tarp. Lay the tarp out flat insuring that top of the tarp is facing up and the 4" pocket is to the rear. To identify the top side of the tarp, insure the side hems fold underneath and the 4" pocket is sewn with hem facing up. Install the tarp into the roller bar by inserting the tarp spline into the tarp slot of the roller bar through the center void where there is a gap between the left hand roller bar outer and the right hand roller bar outer. If the void is not large enough to allow the tarp to be installed from the center void, insert tarp spline into the right hand side of the roller bar. Center the tarp and crank handle to roll up the tarp.

### Reference Figures

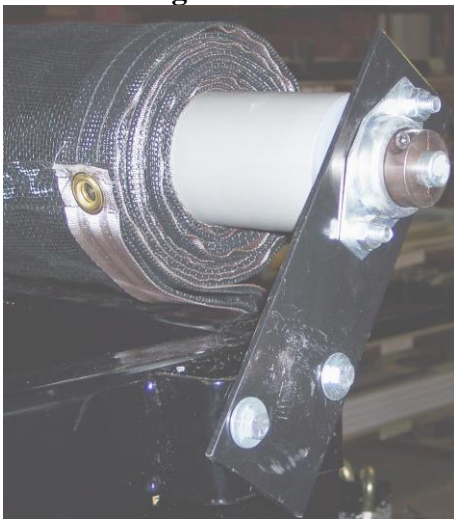


Figure 3 - Passenger Side

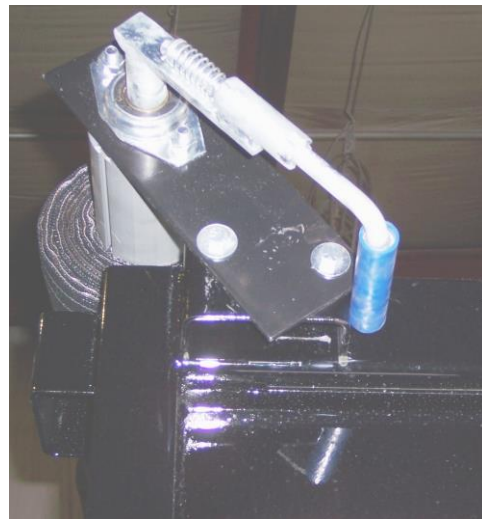


Figure 4 – Driver Side