

4" Bolt on Side Rail Installation

Always wear protective clothing and eyewear when operating tools.
Observe safe tool operation as specified in tool operating instructions.

PARTS

<u>Quantity</u>	<u>Description</u>
1	Left Hand Side Rail
1	Right Hand Side Rail
2	5/16 x 1 Cap Screw
4	5/16 Flat Washer
2	5/16 Hex Lock Nut

INSTALLATION

Locate and identify all components supplied with the 4" Bolt on Side Rail Kit. Hardware is packaged in a 7x10 plastic bag.

Before installing side rails, remove rear carriage bolt from left and right bed to headache rack gussets. Position face of side rails flush with side of bed and line up hole in side rails with hole in gussets, replace carriage bolt, loosely (Figure 1). Transfer hole location at 8" from rear of side rail to the rub rail on truck bed. Remove side rails and drill 13/32" dia. hole (each side of bed).

Replace side rails on truck bed and line up holes, insert (1) 5/16 x 1 cap screw with a 5/16 flat washer into each hole (Figure 2). Secure side rails with (1) 5/16 hex lock nut with flat washer on each bolt. Replace carriage bolt. Tighten 5/16 hardware to 13 ft-lbs.

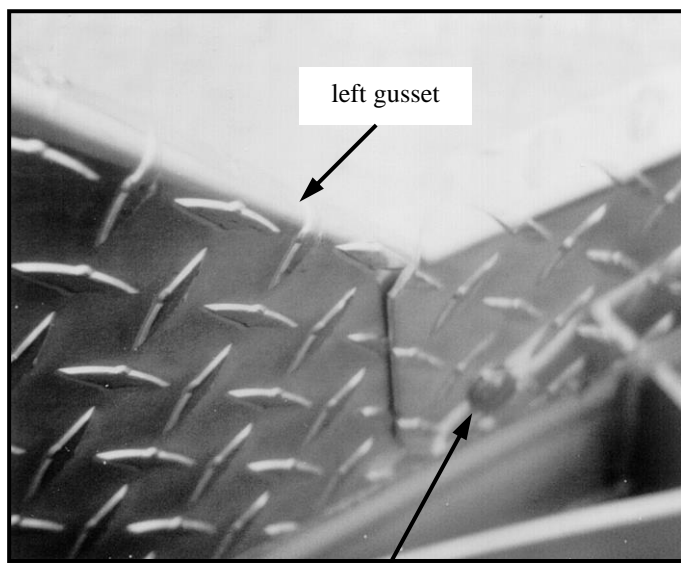


Figure 1

carriage bolt at
rear of gusset



Figure 2

5/16 x 1 cap screw

Optional 4" Tailgate Kit Installation

Always wear protective clothing and eyewear when operating tools.
Observe safe tool operation as specified in tool operating instructions.

PARTS

<u>Quantity</u>	<u>Description</u>
2	1/4 x 1 Cap Screw
2	1/4 Hex Nut
2	Rubber Grommet
1	4" Tailgate Assembly

Locate and identify all components supplied with the 4" Tailgate Kit. Hardware is packaged in a 7x10 plastic bag.

INSTALLATION

Drill 9/16" dia. hole in inside rear corner of side rails at the location shown in Figure 3 (each side). Place tailgate on bed and insert latches into holes in the inside rear corner of side rails. Hold tailgate vertical and centered between sides. Transfer the two hole locations in bottom of tailgate to bed. Check under bed and move wiring if necessary to allow for drilling holes. Remove tailgate and drill 9/16" dia. holes through the bed at the marked locations. Install 1/4 x 1 cap screws from the inside of the tailgate into the holes in the bottom of tailgate. Secure with 1/4 hex nuts tightened to 70 in-lbs. to create grommet mount pins. Install rubber grommets over mount pins. Install tailgate by placing grommets in holes in bed rail and then releasing latches into holes in side rails.

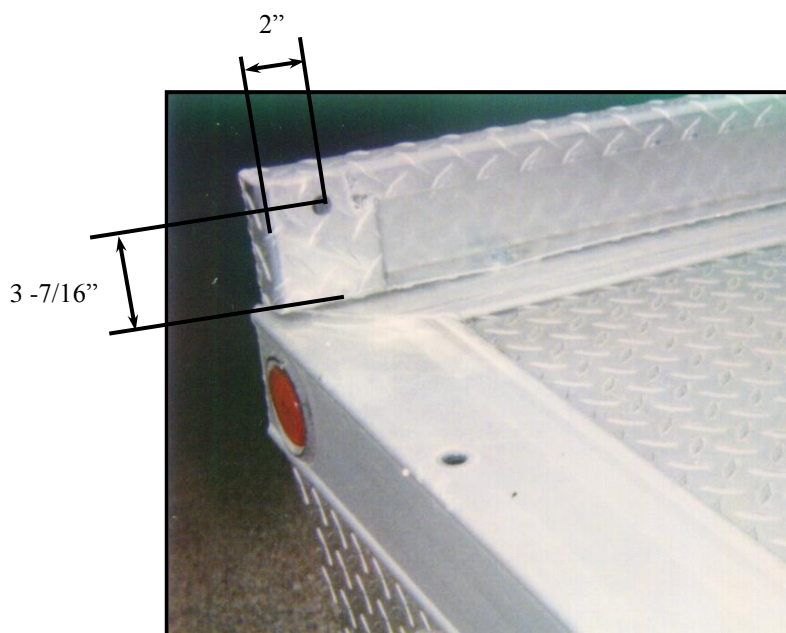


Figure 3

Optional 4" 45 Degree Tailgate Kit Installation

Always wear protective clothing and eyewear when operating tools.
Observe safe tool operation as specified in tool operating instructions.

PARTS

<u>Quantity</u>	<u>Description</u>
2	1/4 x 1 Cap Screw
2	1/4 Hex Nut
2	Rubber Grommet
1	4" 45 Degree Tailgate Assembly
8	1/4 x 1 Tek Screw Hex Washer Head
2	Latch – Chrome Plated
2	Catch Plate – Chrome Plated

Locate and identify all components supplied with the 4" Tailgate Kit. Hardware is packaged in a 7x10 plastic bag.

INSTALLATION

Place tailgate on the bed. Hold tailgate vertical and centered between sides. Transfer the two hole locations in bottom of tailgate to bed. Check under bed and move wiring if necessary to allow for drilling holes. Remove tailgate and drill 9/16" dia. holes through the bed at the marked locations. Install 1/4 x 1 cap screws from the inside of the tailgate into the holes in the bottom of tailgate. Secure with 1/4 hex nuts tightened to 70 in-lbs. to create grommet mount pins. Install rubber grommets over mount pins. Install tailgate by placing grommets in holes in bed rail.

Install latch 1 1/2" from end of side rail. The bottom hole of latch will be 3/8" from bottom of side rail. Install with (2) 1/4 x 1 Tek Screw hex washer head screws. Install the catch plate at approximately 45° angle as shown in Figure 4. The top hole should be 2" from the edge of the tailgate and 3/8" from the top. Install using (2) 1/4 x 1 Tek Screw hex washer head screws. Repeat for opposite side.

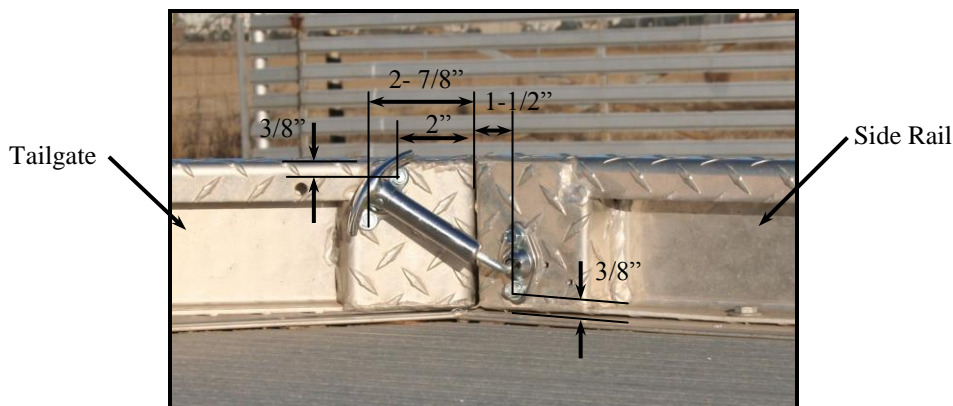


Figure 4