

4" Drop In Side Rails Optional Bolt on Installation



Always wear protective clothing and eyewear when operating tools.
Observe Safe tool operation as specified in tool operating instructions.

PARTS

<u>Quantity</u>	<u>Description</u>
1	Left Hand Side Rail
1	Right Hand Side Rail
2	5/16 x 1 Cap screw
4	5/16 Flat Washer
2	5/16 Hex Lock Nut

Locate and identify all components supplied with the 4" Side Rail Kit. Hardware is packaged in a 7x10 plastic bag.

Before installing side rails, remove rear carriage bolt from left and right bed to headache rack gussets. Position side rails in stake pockets and line up hole in side rails with hole in gussets, replace carriage bolt, loosely (Figure 1). Transfer hole location at 8" from rear of side rail to the rub rail on truck bed. Remove side rails and drill 13/32" dia. hole (each side of bed).

Replace side rails on truck bed and line up holes, insert (1) 5/16 x 1 cap screw with a 5/16 flat washer into each hole (Figure 2). Secure side rails with (1) 5/16 hex lock nut with flat washer on each bolt. Replace carriage bolt. Tighten 5/16 hardware to 13 ft-lbs.

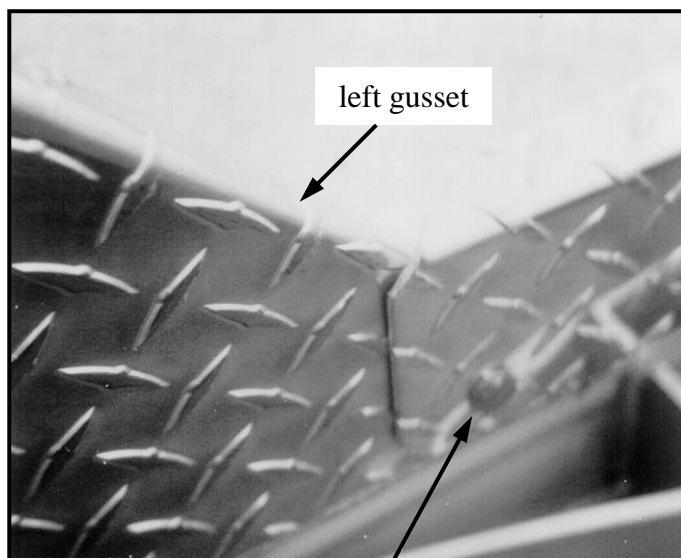


Figure 1

Carriage bolt at
rear of gusset

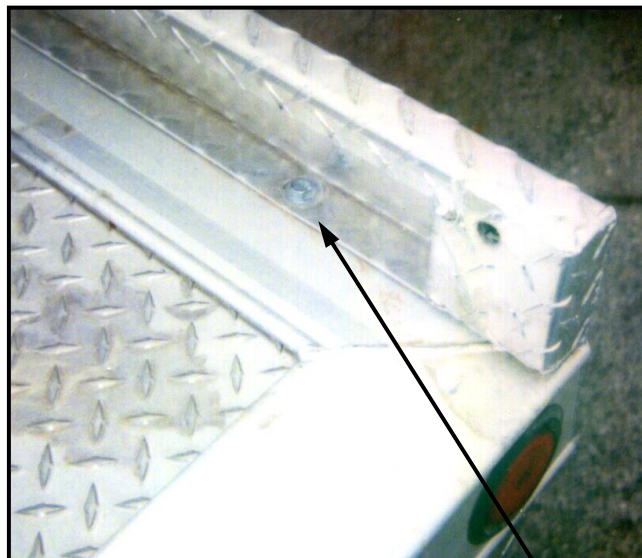


Figure 2

5/16 x 1 cap screw

Manufacturer's Notice: All specifications are subject to change
without notice and without incorporating them into prior units