

### STANDARD EQUIPMENT

2 YEAR LIMITED WARRANTY  
 Epoxy Primer, Black Polyurethane Paint,  
 Headache Rack w/ 1-1/4" Square Tube Louvers & LED Lights,  
 1/8" Steel Treadplate Floor, 2-1/2" Crossmembers,  
 30K Mounting Plate w/ 2-5/16" Ball & Flush Mount Lid,  
 5" Structural Channel Long Sills,  
 LED Lights w/ (6) Stop, Turn, & Tail, and (4) Back-up,  
 LED Clearance & Side Marker Lights, Dual Tag Lights,  
 3" Tie Rail w/ Stake Pockets & Rope Ties,  
 25K rated 2 1/2" receiver tube (2" adapter included),  
 Board Holders Across Front & Back of Bed,  
 Sealed Wiring Harness w/ Plug in Connections,  
 7-Wire Trailer Socket, Lights & Harness Installed,  
 Ready to Accept Hillsboro B&W Conversion Kit



## SINGLE WHEEL TRUCK

ITEM			WEIGHT(LBS)	REF#	LIST PRICE
76310	GLT80-84-38-40-40 F/G	FRAME- 38" C/A- 40" HR- 40" FORD	935	ST820FG33	\$ 3,679
76311	GLT80-84-42-37-36.5 F/G	FRAME-42" C/A-37" HR-36.5" RAM	930	ST820FG33	\$ 3,679
76312	GLT80-84-42-42-36.5 F/G	FRAME- 42" C/A- 42" HR-36.5" GM	930	ST820FG33	\$ 3,679
76313	GLT80-102-38-56-40 F/G	FRAME-38" C/A- 56" HR- 40" FORD	1065	ST820FG75	\$ 3,734
76314	GLT80-102-42-56-36.5 F/G	FRAME- 42" C/A- 56" HR- 36.5" GM/RAM	1065	ST820FG75	\$ 3,734
76317	GLT80-102-38-56-36.5 F/G	FRAME- 38" C/A- 56" HR- 36.5" <2003 Ram	1065	ST820FG75	\$ 3,734
76315	GLT80-112-34-60-40 F/G	FRAME- 34" C/A- 60" H/R- 40" FORD/RAM	1125	ST820FG82	\$ 3,743
76316	GLT80-112-34-60-36.5 F/G	FRAME- 34" C/A- 60" HR- 36.5" GM	1115	ST820FG82	\$ 3,743

## DUAL WHEEL TRUCK

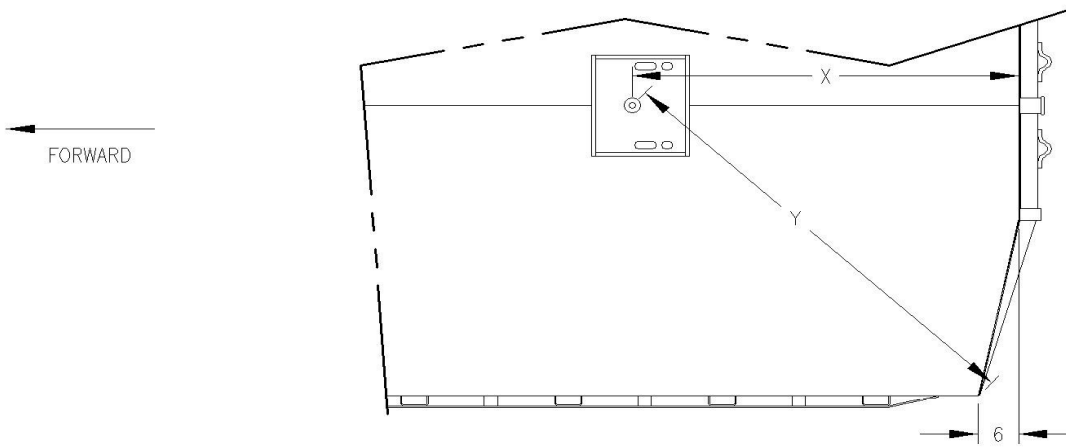
ITEM			WEIGHT(LBS)	REF#	LIST PRICE
76323	GLT88-112-34-60-40 F/G	FRAME- 34" C/A- 60" HR- 40" >2007 GM	1170	ST030FG36	\$ 3,943
76325	GLT88-136-34-84-40 F/G	FRAME- 34" C/A- 84" HR- 40" >2007 GM	1360	ST230FG39	\$ 4,206
76329	GLT96-102-38-56-36.5 F/G	FRAME- 38" C/A- 56" HR- 36.5 <2003 RAM	1165	ST920FG23	\$ 3,796
76330	GLT96-102-38-56-40 F/G	FRAME- 38" C/A- 56" HR- 40" FORD	1170	ST920FG23	\$ 3,796
76331	GLT96-102-42-56-36.5 F/G	FRAME- 42" C/A- 56" HR- 36.5" GM/RAM	1165	ST920FG23	\$ 3,796
76332	GLT96-112-34-60-40 F/G	FRAME- 34" C/A- 60" HR- 40" FORD/GM/RAM	1230	ST030FG36	\$ 3,943
76334	GLT96-136-34-84-40 F/G	FRAME- 34" C/A- 84" HR- 40" FORD/GM/RAM	1430	ST330FG19	\$ 4,310

## G I SERIES ACCESSORIES AND OPTIONS (Not Installed)

OPTIONS (Installed)			REF#	LIST PRICE
X7008	STL 46" HEADACHE RACK, ILOS		ST300ES11	\$ 404
X7007	STL 52" HEADACHE RACK, ILOS		ST400ES27	\$ 555
X7003	DELETE MNTG PLATE & LID	Requires Stake Pockets and Tie Rails	ST000ES00	\$ -
X7002	DELETE STAKE POCKET & TIE RAIL	Requires Mounting Plate and Lid	ST000ES00	\$ -

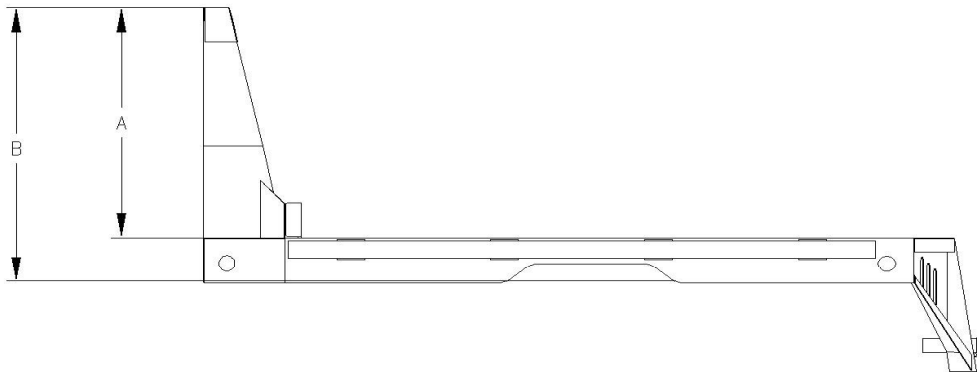
MUDFLAPS			REF#	LIST PRICE
232953	MUD FLAP -.375X18X30 W/ 2005 H LOGO	(\$44 Each \$88 Per Pair)	MI000TS34	\$ 44
232954	MUD FLAP -.375X24X30 W/ 2005 H LOGO	(\$47 Each \$94 Per Pair)	MI000TS36	\$ 47

FUEL ACCSSORIES			REF#	LIST PRICE
71989	Fuel Filler Mount Assy		ST000ES23	\$ 30
73465	Def Filler Mount Assy		ST000ES23	\$ 30



STEEL GI TRUCK BED				
BED LENGTH	DIM Y			DIM X
	80" W	88" W	96" W	
84"	60 1/4"			51"
102"	61 3/4"		67 1/4"	53"
112"	65 3/8"	68"	70 5/8"	57 3/4"
136"		68"	70 5/8"	57 3/4"

TITLE					<b>STEEL GI TRUCK BED BALL DIMENSIONS</b>		<i>Hillsboro Industries</i> 220 Industrial Road Hillsboro, KS 67063		1-800-835-0209 hi@hillsboroindustries.com www.hillsboroindustries.com	
DWG NO.	REV	DATE	DRAWN BY	SCALE	PAGE					
?????	A	8-13-15	APD	1/20						



HEADACHE RACK HEIGHT "A"	36 1/2"	40"
BOTTOM OF 5" CHANNEL STRINGERS TO TOP OF HEADACHE RACK "B"	44 1/8"	47 5/8"

TITLE					<b>STEEL GI TRUCK BED HEADACHE RACK HEIGHT</b>		<i>Hillsboro Industries</i> 220 Industrial Road Hillsboro, KS 67063		1-800-835-0209 hi@hillsboroindustries.com www.hillsboroindustries.com	
DWG NO.	REV	DATE	DRAWN BY	SCALE	PAGE					
?????	A	8-13-15	APD	1/20						